

## CSKMR-OFF

### מהבהב אסימטרי (השהייה בחיבור)

When input voltage is applied (A1) (A2) the time ( $t_1$  = pause) begins to run relay remains at the off position. On completion of ( $t_1$ ) the output relay energize and remains in the on position during time ( $t_2$ =pulse) LED (R) turned on. The output relay (R) continues to operate in the set pulse-pause ratio for as long as the input voltage is maintained. The timer will turned off and resets itself if power is disconnected.



#### General specifications

- Main Standards: IEC 61812-1, IEC 61000-6-2, EN 50178
- Additional standards: IEC 61000-4-2, IEC 61000-4-3, IEC 61000-4-4, IEC 61000-4-5
- Protection class open air: IP20
- Protection class enclosed (accessible front): IP40
- Self-extinguishing plastic housing UL V0 acc IEC 529
- Mounting position: on DIN-rail TS 35 according to EN 50022
- Mounting position: vertically
- Terminal : acc IEC 60947-7-1, IEC 60998-1
- Terminal Capacity:  $1 \times 4 \text{mm}^2$  without multicore cable end  
 $1 \times 0.5$  to  $2.5 \text{mm}^2$  with/without multicore cable end

#### Display

- Power on: LED green (Un) Indicates of supply voltage
- Relay energized: LED red (R) indicates of relay energized.

#### Incoming supply circuit

- Supply voltage: 240VAC
- Supply tolerance:  $\pm 10\%$
- Incoming Supply terminals: A1 (+) – A2 refer to table below.
- Rated power consumption: 2 VA
- Rated frequency for as voltage: 48 to 63 Hz
- Duty cycle: 100%
- Reset time: 30 ms
- Drop off voltage:  $\geq 20\%$  of nominal voltage.

#### Output circuit

- Relay: 1 C/O
- Rated voltage: 250 Vac
- Switching capacity ac: 2000 VA (8A / 250V)  $\text{COS } \varphi = 1$
- Switching capacity dc: 3 A 30 Vdc
- Max switching capacity ac: 10 A
- Mechanical life:  $1 \times 10^6$  operations
- Electrical life at 1000 VA  $\text{COS } \varphi = 1$ : 200.000 operations

#### Accuracy

- Base accuracy at min. and max scale:  $\pm 1\%$
- Adjusting accuracy:  $< 5\%$  of max scale value
- Repetition accuracy under constant condition:  $< 0.5\%$  (as % of full range)
- Voltage influence: No
- Temperature influence:  $< 0.01\% / ^\circ\text{C}$

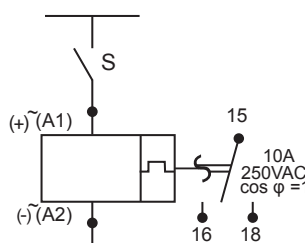
#### Environmental conditions

- Permissible ambient temperature:  $-25^\circ\text{C} \dots +55^\circ\text{C}$
- Storage temperature:  $-25^\circ\text{C} \dots +70^\circ\text{C}$
- Transport temperature:  $-25^\circ\text{C} \dots +70^\circ\text{C}$
- Relative humidity (acc. IEC 721-3-3 CLASS 3K3): 15% to 85%
- Vibration resistance (acc. IEC 68-2-6): 10 TO 55 H

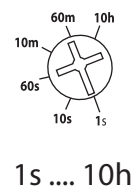
#### Dimensions & weight

- Width: 18 mm
- Height: 89 mm
- Depth (excl. DIN-profile): 64 mm
- Weight: 56 gram

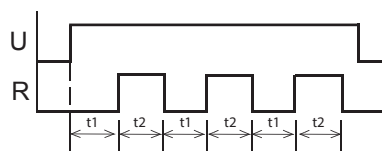
#### Connections



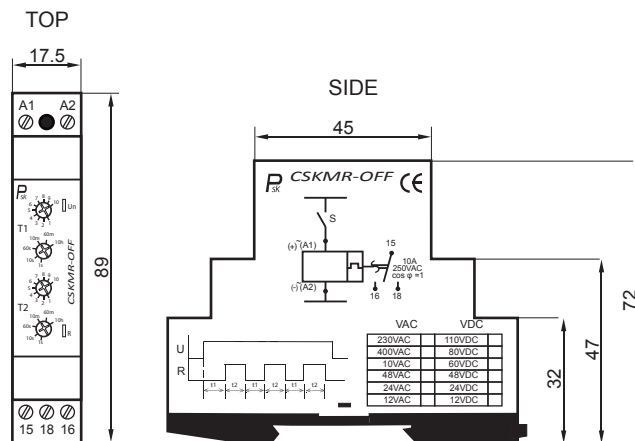
#### Timing T1/T2



#### Function



#### Dimensions



#### Ordering information

CSKMR-OFF – V Supply Voltage

VAC	VDC
230VAC	110VDC
400VAC	80VDC
110VAC	60VDC
48VAC	48VDC
24VAC	24VDC
12VAC	12VDC