

## LMR

### בקר זרם לתאורת התראה

LMR (Lamp Monitor Relay) monitors consistently the current that flows through a warning lamp. When using warning lamp in application such as antenna tower, High rise building, air ports etc, it is important to maintain properly activity of the warning lamps. By monitoring the current flow through the lamp, the LMR indicates if the lamp is lit or not. When the lamp is lit the output relay energizes. The relay disconnects if the lamp fail to work or the supply voltage has been removed from the device.



### General specifications

- Main Standards: IEC 61812-1, IEC 61000-6-2, EN 50178
- Additional standards: IEC 61000-4-2, IEC 61000-4-3, IEC 61000-4-4, IEC 61000-4-5
- Protection class open air: IP20
- Self-extinguishing plastic housing UL V0 acc IEC 529
- Mounting position: on DIN-rail TS 35 according to EN 50022
- Mounting position: vertically
- Monitoring current: 80mA - 1.5A
- Load: ≤200W
- Terminal : acc IEC 60947-7-1, IEC 60998-1
- Terminal Capacity: 1x4mm<sup>2</sup> without multicore cable end  
 1x0.5 to 2.5mm<sup>2</sup> with/without multicore cable end

### Incoming supply circuit

- Supply voltage: 230VAC
- Supply tolerance: ± 10%
- Incoming Supply terminals: A1 (+) – A2 refer to table below.
- Rated power consumption: 1 VA
- Rated frequency for as voltage: 48 to 63 Hz
- Duty cycle: 100%
- Reset time: 30 ms
- Drop off voltage: ≥ 20% of nominal voltage.

### Output circuit

- Relay: 1 C/O
- Rated voltage: 250 Vac
- Switching capacity ac: 1000 VA (8A / 250V) COS φ = 1
- Switching capacity dc: 6 A 30 Vdc
- Max switching capacity ac: 10 A
- Mechanical life: 1 x 10<sup>6</sup> operations
- Electrical life at 1000 VA COS φ =1: 200.000 operations

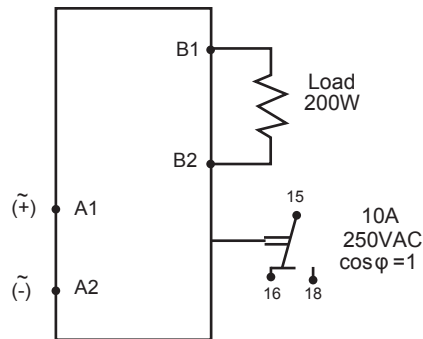
### Environmental conditions

- Permissible ambient temperature: -25°C....+55°C
- Storage temperature: -25°C....+70°C
- Transport temperature: -25°C....+70°C
- Relative humidity (acc. IEC 721-3-3 CLASS 3K3): 15% to 85%
- Vibration resistance (acc. IEC 68-2-6): 10 TO 55 H

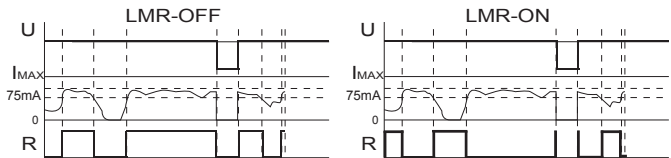
### Dimensions & weight

- Width: 24 mm
- Height: 72 mm
- Depth (excl. DIN-profile): 65 mm
- Weight: 74 gram

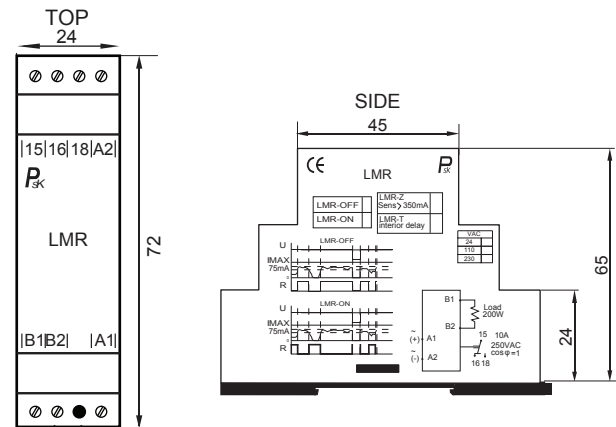
### Connections



### Function



### Dimensions



### Ordering information

LMR — V		VAC
Supply Voltage		24
		110
		230