

NCSKMR-ON

מהבהב אסימטרי (השהייה בניתוק)

When input voltage is applied (A1) (A2) the output relay (R) energizes immediately and time (t1 = pulse) begins to run LED (R) turned on. On completion of (t1) the output relay de-energizes and remains in the off position during time (t2=pause). The LED (R) turned off. The output relay (R) continues to operate in the set pulse-pause ratio for as long as the input voltage is maintained. The timer will turned off and resets itself if power is disconnected.

General specifications

- Main Standards: IEC 61812-1, IEC 61000-6-2, EN 50178
- Additional standards: IEC 61000-4-2, IEC 61000-4-3, IEC 61000-4-4, IEC 61000-4-5
- Protection class open air: IP20
- Protection class enclosed (accessible front): IP40
- Self-extinguishing plastic housing UL V0 acc IEC 529
- Mounting position: on DIN-rail TS 35 according to EN 50022
- Mounting position: vertically
- Terminal : acc IEC 60947-7-1, IEC 60998-1
- Terminal Capacity: 1x4mm² without multicore cable end
1x0.5 to 2.5mm² with/without multicore cable end

Display

- Power on: LED green (Un) Indicates of supply voltage
- Relay energized: LED red (R) indicates of relay energized.

Incoming supply circuit

- Supply voltage: 240VAC
- Supply tolerance: $\pm 10\%$
- Incoming Supply terminals: A1 (+) – A2 refer to table below.
- Rated power consumption: 2 VA
- Rated frequency for as voltage: 48 to 63 Hz
- Duty cycle: 100%
- Reset time: 30 ms
- Drop off voltage: $\geq 20\%$ of nominal voltage.

Output circuit

- Relay: 1 C/O
- Rated voltage: 250 Vac
- Switching capacity ac: 2000 VA (8A / 250V) COS $\varphi = 1$
- Switching capacity dc: 3 A 30 Vdc
- Max switching capacity ac: 10 A
- Mechanical life: 1×10^6 operations
- Electrical life at 1000 VA COS $\varphi = 1$: 200.000 operations

Accuracy

- Base accuracy at min. and max scale: $\pm 1\%$
- Adjusting accuracy: $< 5\%$ of max scale value
- Repetition accuracy under constant condition: $< 0.5\%$ (as % of full range)
- Voltage influence: No
- Temperature influence: $< 0.01\% / ^\circ\text{C}$

Environmental conditions

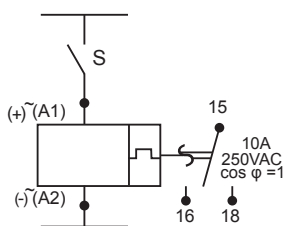
- Permissible ambient temperature: $-25^\circ\text{C} \dots +55^\circ\text{C}$
- Storage temperature: $-25^\circ\text{C} \dots +70^\circ\text{C}$
- Transport temperature: $-25^\circ\text{C} \dots +70^\circ\text{C}$
- Relative humidity (acc. IEC 721-3-3 CLASS 3K3): 15% to 85%
- Vibration resistance (acc. IEC 68-2-6): 10 TO 55 Hz



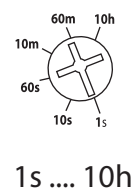
Dimensions & weight

- Width: 18 mm
- Height: 89 mm
- Depth (excl. DIN-profile): 64 mm
- Weight: 65 gram

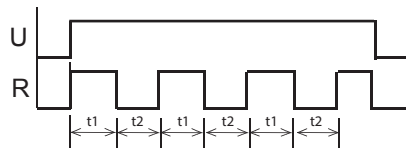
Connections



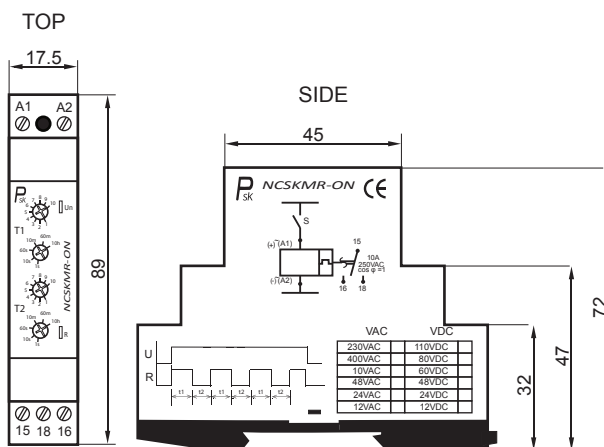
Timing T1/T2



Function



Dimensions



Ordering information

NCSKMR-ON — V

Supply Voltage

VAC	VDC
230VAC	110VDC
400VAC	80VDC
110VAC	60VDC
48VAC	48VDC
24VAC	24VDC
12VAC	12VDC